

If you're experiencing problems with your 5-in-1 sensor such as no wind-speed readings or lower than expected wind speed readings and your 5-in-1 sensor is mounted properly, the bearings for the anemometer may be worn and will require replacement. Your AcuRite 5-in-1 sensor features a modular design that allows for the replacement of certain assemblies should they wear or cease to function. Please take care when handling the 5-in-1 sensor components as the electronic components inside are sensitive.

**NOTE:** You will need to remove your existing 5-in-1 sensor from its mounting location to replace the wind speed (anemometer) bearing sub-assembly.



Scan QR Code to View a Video!

**NOTE: REMOVE BATTERIES FROM SENSOR TO ELIMINATE ERRONEOUS RAINFALL OR WIND READINGS WHEN HANDLING AND TRANSPORTING SENSOR.**



**NEW BEARING ASSEMBLY**

**WHAT YOU NEED:**

- Your 5-in-1 Sensor
- New Bearing Assembly
- Phillips Head Screwdriver



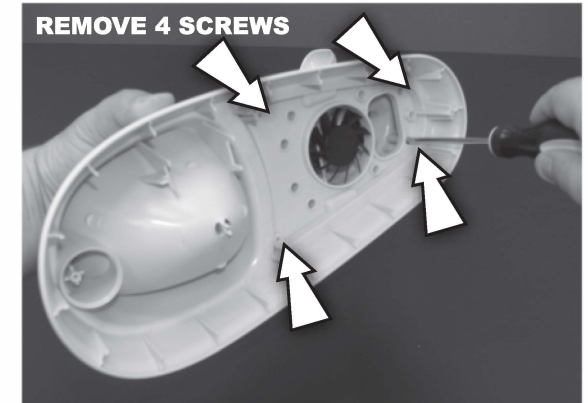
**REMOVE 4 SCREWS**

**1. Remove four LONG screws and separate upper white portion and lower gray portions of the sensor. Keep the screws for re-assembly.**



**SET ASIDE**

**2. Set aside the lower gray portion for reassembly later.**



**REMOVE 4 SCREWS**

**3. Turn the upper white portion over and remove the 4 SHORT screws near the fan assembly. Keep the screws for reassembly.**



**REMOVE AND DISCARD**

**KEEP!**

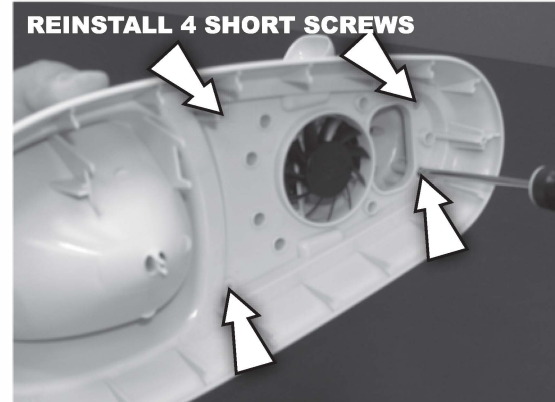
**DISCARD**

**4. Gently remove the old upper wind speed and solar assembly from rain housing and discard.**



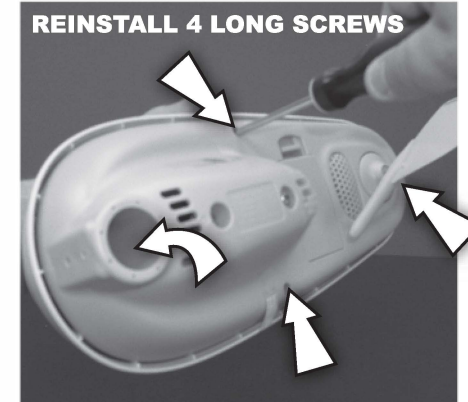
**INSTALL NEW ASSEMBLY**

**5. Place new wind speed/solar assembly and line up the screw holes with the upper rain housing.**



**REINSTALL 4 SHORT SCREWS**

**6. Turn the upper white portion over and re-install the 4 SHORT screws and tighten by hand.**



**REINSTALL 4 LONG SCREWS**

**7. Reinstall four LONG screws to join the upper white portions and lower gray portions of the sensor.**