

Sportsman's Forecaster models 00251W/00252W/02052



CONTENTS

Unpacking Instructions	2	Set the Time, Date & Units	6
Package Contents	2	Placement Guidelines	7
Product Registration	2	Using the Forecaster.....	8
Features & Benefits: Sensor.....	2	Troubleshooting	10
Features & Benefits: Display....	3	Care & Maintenance.....	11
Setup	5	Replace Intelli-Time® battery ..	11
Sensor Setup	5	Specifications.....	12
Display Setup	5	FCC Information	12
Intelli-Time® Clock	6	Customer Support	13
		Warranty.....	13

Questions? Contact Customer Support at
(877) 221-1252 or visit www.AcuRite.com.

SAVE THIS MANUAL FOR FUTURE REFERENCE.



Congratulations on your new AcuRite product. To ensure the best possible product performance, please read this manual in its entirety and retain it for future reference.

Unpacking Instructions

Remove the protective film that is applied to the LCD screen prior to using this product. Locate the tab and peel off to remove.

Package Contents

1. Display unit with Tabletop Stand
2. Outdoor sensor
3. Instruction Manual

IMPORTANT

PRODUCT MUST BE REGISTERED
TO RECEIVE WARRANTY SERVICE

PRODUCT REGISTRATION

Register online
to receive 1 year
warranty protection

www.AcuRite.com

GO NOW
TIPS FOR

SUPPORT

Support Forum

Archived Products

►Register a Product

Features & Benefits



OUTDOOR SENSOR

- 1. Integrated Hanger**
For easy placement.
- 2. Wireless Signal Indicator**
Flashes when data is being sent to the display unit.
- 3. Battery Compartment**
- 4. Battery Compartment Cover**

Features & Benefits



DISPLAY UNIT

1. Hunting or Fishing Activity Meter

Predicts wildlife activity level. Select hunting, fishing, or auto-cycle between both.

2. Pressure History Graph

Tracks and displays the barometric pressure history.

3. Barometric Pressure

Arrow icon indicates the direction the pressure is trending.

4. Intelli-Time® Clock

Automatically updates for Daylight Saving Time.

5. Display Low Battery Indicator

6. Monthly High Temperature Record

7. Current Outdoor Temperature

8. Monthly Low Temperature Record

9. Learning Mode Icon

Disappears after weather forecast self-calibration is complete.

10. 12 to 24 Hour Weather Forecast

Self-Calibrating Forecasting pulls data from the outdoor sensor to generate your personal forecast.

11. Moon Phase

12. Date

13. Today's High Temperature Record

14. Outdoor Sensor Signal Strength

15. Today's Low Temperature Record

16. Sensor Low Battery Indicator

17. Hunting/Fishing Mode Button

18. Tabletop Stand

Features & Benefits



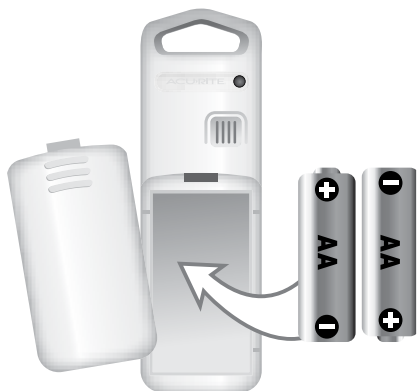
BACK OF DISPLAY UNIT

- | | |
|---|--|
| 1. " + " Button
For setup preferences | 5. " - " Button
For setup preferences |
| 2. SET Button
For setup preferences | 6. RESET Button
Full reset to factory defaults |
| 3. Battery Compartment | 7. Battery Compartment Cover |
| 4. Intelli-Time® Battery Compartment | |

Install or Replace Batteries

AcuRite recommends high quality alkaline batteries for the best product performance. Heavy duty or rechargeable batteries are not recommended.

The outdoor sensor requires lithium batteries in low temperature conditions. Cold temperatures can cause alkaline batteries to function improperly. Use lithium batteries in the outdoor sensor for temperatures below -4°F / -20°C.



Outdoor Sensor

1. Slide off the battery compartment cover.
2. Insert 2 x AA batteries into the battery compartment, as shown. Follow the polarity (+/-) diagram in the battery compartment.
3. Replace the battery cover.

LITHIUM
BATTERIES

4 F 4 C (70°C) 158°F

ALKALINE
BATTERIES

4 F 2 C (70°C) 158°F



Display Unit

1. Slide the stand off of the bottom of the display, as shown.
2. Slide off the battery compartment cover.
3. Insert 3 x AA batteries into the battery compartment, as shown. Follow the polarity (+/-) diagram in the battery compartment.
4. Replace the battery cover.
5. Replace the stand.



PLEASE DISPOSE OF OLD OR DEFECTIVE BATTERIES IN AN ENVIRONMENTALLY SAFE WAY AND IN ACCORDANCE WITH YOUR LOCAL LAWS AND REGULATIONS.

BATTERY SAFETY: Clean the battery contacts and also those of the device prior to battery installation. Remove batteries from equipment which is not to be used for an extended period of time. Follow the polarity (+/-) diagram in the battery compartment. Promptly remove dead batteries from the device. Dispose of used batteries properly. Only batteries of the same or equivalent type as recommended are to be used. DO NOT incinerate used batteries. DO NOT dispose of batteries in fire, as batteries may explode or leak. DO NOT mix old and new batteries or types of batteries (alkaline/standard). DO NOT use rechargeable batteries. DO NOT recharge non-rechargeable batteries. DO NOT short-circuit the supply terminals.

Intelli-Time® Clock

Intelli-Time products are pre-programmed with the correct time and date. All you need to do is select your Time Zone and Daylight Saving Time preferences. The clock will then automatically update for Daylight Saving Time.

Set the Time, Date & Units

Press and hold the "SET" button to enter SET MODE. Once in SET MODE, the preference you are currently setting will blink on the display.

To adjust the currently selected (flashing) item, press and release the " + " or " - " buttons (press and HOLD to fast adjust).

To save your adjustments, press and release the "SET" button again to adjust the next preference. The preference set order is as follows:

TIME ZONE (PST MST CST EST AST HAST AKST)

DST* (Daylight Saving Time ON or OFF)

CLOCK HOUR

CLOCK MINUTE

CALENDAR MONTH

CALENDAR DATE

CALENDAR YEAR

UNITS: TEMPERATURE (°F or °C)

UNITS: PRESSURE (inHg or hPa)

You will automatically exit SET MODE if no buttons are pressed for 20 seconds. Enter SET MODE at any time by pressing the "SET" button.

*If you live in an area that observes daylight saving time, DST should be set to ON, even if it is not currently Daylight Saving Time.

Placement for Maximum Accuracy

AcuRite sensors are sensitive to surrounding environmental conditions. Proper placement of both the display unit and outdoor sensor are critical to the accuracy and performance of this product.



Display Unit Placement

Place the display unit in a dry area free of dirt and dust. Display unit stands upright for tabletop use.



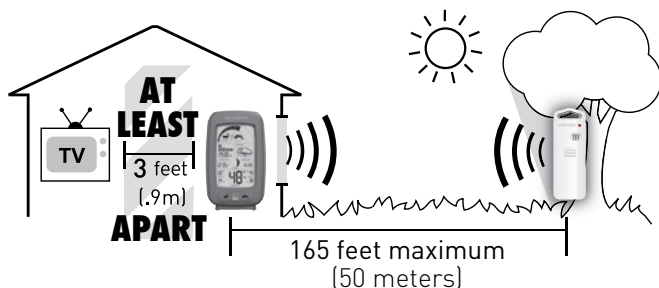
Outdoor Sensor Placement

Sensor must be placed outside to observe outdoor conditions. Sensor is water resistant and is designed for general outdoor use, however, to extend its life place the sensor in an area protected from direct weather elements.

Hang the sensor using the integrated hang holes or hanger, or by using string (not included) to hang it from a suitable location, like a well covered tree branch. The best location is 4 to 8 feet above the ground with permanent shade and plenty of fresh air to circulate around the sensor.

Important Placement Guidelines

- To ensure accurate temperature measurement, place units out of direct sunlight and away from any heat sources or vents.
- Display unit and outdoor sensor must be within 165 ft (50 m) of each other.
- To maximize wireless range, place units away from large metallic items, thick walls, metal surfaces, or other objects that may limit wireless communication.
- To prevent wireless interference, place both units at least 3 ft (.9 m) away from electronic devices (TV, computer, microwave, radio, etc.).



Setup is Complete

The sensor will now synchronize with the display unit. It may take a few minutes for synchronization to complete. Please refer to the troubleshooting section of this manual if anything appears to be functioning improperly.

Using the Sportsman's Forecaster

Hunting & Fishing Activity Meter


Don't miss out on favorable weather and wildlife conditions! AcuRite's Hunting & Fishing Activity Meter predicts wildlife activity levels by combining weather observations with lunar positioning data. View the fishing meter, the hunting meter, or automatically cycle between both meters.

The Mode button (shown right), located on the front of the display, allows you to select the meter mode:



 **Hunting Activity
Meter Mode**

 **Fishing Activity
Meter Mode**






 **Auto-cycle between
hunting & fishing
activity meters. Press
AND HOLD Mode
button for 3 seconds.**

Learning Mode

Self-Calibrating Forecasting uses a unique algorithm to analyze changes in pressure over a time period (called Learning Mode) to determine your altitude. After 14 days, the Learning Mode icon disappears from the display screen. At this point, the self-calibrated pressure is tuned in to your location and the unit is ready for superior weather prediction.

Weather Forecast

AcuRite's patented Self-Calibrating Forecasting provides your personal forecast of weather conditions for the next 12 to 24 hours by collecting data from the sensor in your backyard. It generates a forecast with pinpoint accuracy - personalized for your exact location.

STORMY & WINDY	SNOW LIKELY	SNOW / RAIN MIX LIKELY	RAIN LIKELY	MOSTLY CLOUDY
				
(flashing=stormy)				

View the complete list of icons at www.AcuRite.com/acurite-icons

Barometric Pressure

Subtle variations in barometric pressure greatly impact the weather. This weather forecaster displays the current pressure and indicates the direction the pressure is trending (FALLING, STEADY, or RISING).

Moon Phase

Track the phases of the moon, conveyed through simple lunar phase icons:



High & Low Records


Today's high and low records are displayed for outdoor temperature. Today's records automatically clear at 12:00am midnight every day.

Monthly high and low records are displayed for outdoor temperature. Monthly records automatically clear at 12:00am midnight on the last day of the month.

To manually clear all LOW recorded values, press and HOLD the “-” button for 2 seconds. Dashes will display to confirm you have cleared the LOW records.

To manually clear all HIGH recorded values, press and HOLD the “+” button for 2 seconds. Dashes will display to confirm you have cleared the HIGH records.

Troubleshooting

Problem	Possible Solution
No outdoor sensor reception 	<p>If the wireless signal indicator shows no bars:</p> <ul style="list-style-type: none"> • Relocate the display unit and/or the outdoor sensor. The units must be within 165 ft (50 m) of each other. • Make sure both units are placed at least 3 feet (.9 m) away from electronics that may interfere with the wireless communication (such as TVs, microwaves, computers, etc). • Use standard alkaline batteries (or lithium batteries in sensor when temperature is below -4°F/-20°C). Do not use heavy duty or rechargeable batteries. NOTE: It may take up to 20 minutes for display unit and sensor to synchronize after batteries are replaced.
Display screen not working	<ul style="list-style-type: none"> • Check that the batteries are installed correctly. Batteries may need to be replaced. • Reset the display by pressing the RESET button, located in the battery compartment of the display unit. Date and time will need to be entered after a reset.
Outdoor temperature is flashing or showing dashes	<p>Flashing of the outdoor temperature is generally an indication of wireless interference.</p> <ol style="list-style-type: none"> 1. Bring both the sensor and display unit indoors and remove batteries from each. 2. Reinstall batteries in the outdoor sensor. 3. Reinstall batteries in the display unit. 4. Let the units sit within a couple feet of each other for about 20 minutes to gain a strong connection.
Inaccurate forecast	<ul style="list-style-type: none"> • Weather Forecast icon predicts conditions for the next 12 to 24 hours, not current conditions. • Has Learning Mode icon disappeared from the display unit? Learning Mode must complete before forecast and pressure will be accurate. • Allow unit to run continuously for 33 days. Battery removal or resetting the display unit will restart Learning Mode. After 14 days, forecast should be fairly accurate, however Learning Mode calibrates for a total of 33 days.
Inaccurate temperature	<ul style="list-style-type: none"> • Make sure both the display unit and sensor are placed out of direct sunlight and away from any heat sources or vents (see page 7).

If your AcuRite product does not operate properly after trying the troubleshooting steps, visit www.AcuRite.com or call (877) 221-1252 for assistance.

Care & Maintenance

Display Unit Care

Clean with a soft, damp cloth. Do not use caustic cleaners or abrasives. Keep away from dust, dirt and moisture. Clean ventilation ports regularly with a gentle puff of air.

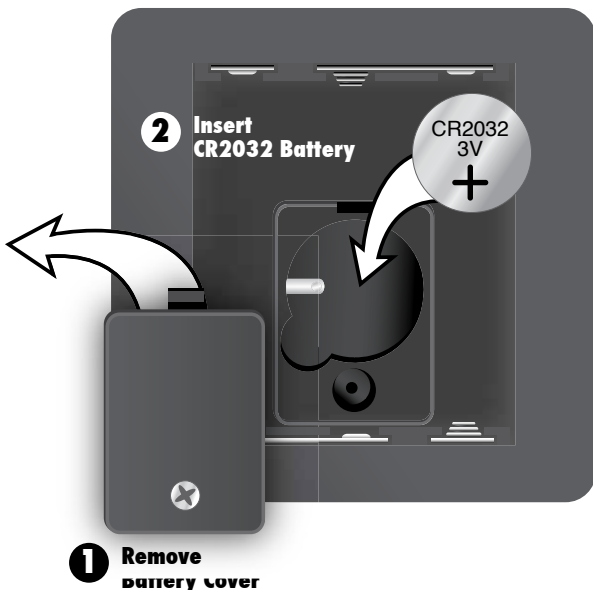
Outdoor Sensor Care

Clean with a soft damp cloth. Do not use caustic cleaners or abrasives.

Replace Intelli-Time Clock Battery

Intelli-Time technology is powered by a pre-installed coin-cell battery that stores the time and date settings. The battery has a shelf life of several years. Time and date will need to be entered after replacing Intelli-Time battery. To replace the Intelli-Time battery:

1. Locate the coin cell battery compartment door in the battery compartment of the display unit. Unscrew and remove the compartment cover.
2. Insert 1 x CR2032 coin cell battery into the battery compartment, as shown. Install battery with "+" positive terminal facing OUT.
3. Screw in the battery cover.



WARNING: THIS PRODUCT CONTAINS A BUTTON-CELL BATTERY. IF SWALLOWED, IT COULD CAUSE SEVERE INJURY OR DEATH IN JUST 2 HOURS. SEEK MEDICAL ATTENTION IMMEDIATELY IF INGESTED.



Specifications

TEMPERATURE RANGE	Outdoor: -40°F to 158°F; -40°C to 70°C
WIRELESS RANGE	165 ft / 50 m depending on home construction materials
OPERATING FREQUENCY	433 MHz
POWER	Display: 3 x AA alkaline batteries Sensor: 2 x AA alkaline or lithium batteries
DATA REPORTING	30 second updates

FCC Information

This device complies with part 15 of FCC rules. Operation is subject to the following two conditions:

- 1- This device may NOT cause harmful interference, and
 - 2- This device must accept any interference received, including interference that may cause undesired operation.
- This equipment has been tested and found to comply with the limits for a Class B digital device, pursuant to Part 15 of the FCC rules. These limits are designed to provide reasonable protection against harmful interference in a residential installation. This equipment generates, uses and can radiate radio frequency energy and, if not installed and used in accordance with the instructions, may cause harmful interference to radio communications. However, There is no guarantee that interference will not occur in a particular installation. If this equipment does cause harmful interference to radio or television reception, which can be determined by turning the equipment off and on, the user is encouraged to try to correct the interference by one or more of the following measures:

- Reorient or relocate the receiving antenna.
 - Increase the separation between the equipment and the receiver.
 - Connect the equipment into an outlet on a circuit different from that to which the receiver is connected.
 - Consult the dealer or an experienced radio/TV technician for help.
- NOTE: The manufacturer is not responsible for any radio or TV interference caused by unauthorized modifications to this equipment. Such modifications could void the user authority to operate the equipment.

This device complies with Industry Canada licence-exempt RSS standard(s).

Operation is subject to the following two conditions:

- (1) This device may not cause interference, and
- (2) This device must accept any interference received, including interference that may cause undesired operation of the device.

Customer Support

AcuRite customer support is committed to providing you with best-in-class service. **For assistance**, please have the model number of this product available and contact us in any of the following ways:



(877) 221-1252



info@chaney-inst.com

24/7 support at **www.AcuRite.com**

- Installation Videos
- Register your Product
- Instruction Manuals
- Support User Forum
- Replacement Parts
- Submit Feedback & Ideas

IMPORTANT

PRODUCT MUST BE REGISTERED
TO RECEIVE WARRANTY SERVICE

PRODUCT REGISTRATION

Register online
to receive 1 year
warranty protection

www.AcuRite.com

► NOW

SUPPORT

Support Forum

Archived Products

► Register a Product

Limited One Year Warranty

At AcuRite, we proudly uphold our commitment to quality technology. Chaney Instrument Co. warrants that all products it manufactures to be of good material and workmanship, and to be free of defects when properly installed and operated for a period of one year from the date of purchase.

We recommend that you visit us at **www.AcuRite.com** for the fastest way to register your product. However, product registration does not eliminate the need to retain your original proof of purchase in order to obtain warranty benefits.

Chaney Instrument Co. warrants that all products it manufactures to be of good material and workmanship, and to be free of defects when properly installed and operated for a period of one year from the date of purchase. Remedy for breach of this warranty is limited to repair or replacement of the defective item(s). Any product which, under normal use and service, is proven to breach the warranty contained herein within ONE YEAR from date of sale will, upon examination by Chaney, and at its sole option, be repaired or replaced by Chaney. Transportation costs and charges for returned goods shall be paid for by the purchaser. Chaney hereby disclaims all responsibility for such transportation costs and charges. This

warranty will not be breached, and Chaney will give no credit for products it manufactures which have received normal wear and tear, been damaged (including by acts of nature), tampered, abused, improperly installed, damaged in shipping, or repaired or altered by others than authorized representatives of Chaney.

The above-described warranty is expressly in lieu of all other warranties, express or implied, and all other warranties are hereby expressly disclaimed, including without limitation the implied warranty of merchantability and the implied warranty of fitness for a particular purpose. Chaney expressly disclaims all liability for special, consequential or incidental damages, whether arising in tort or by contract from any breach of this warranty. Some states do not allow the exclusion or limitation of incidental or consequential damages, so the above limitation or exclusion may not apply to you. Chaney further disclaims all liability from personal injury relating to its products to the extent permitted by law. By acceptance of any of Chaney's products, the purchaser assumes all liability for the consequences arising from their use or misuse. No person, firm or corporation is authorized to assume for Chaney any other liability in connection with the sale of its products. Furthermore, no person, firm or corporation is authorized to modify or waive the terms of this paragraph, and the preceding paragraph, unless done in writing and signed by a duly authorized agent of Chaney. This warranty gives you specific legal rights, and you may also have other rights which vary from state to state.

For in-warranty claims: Chaney Instrument Co.
965 Wells St., Lake Geneva, WI 53147

ACU RITE®



Weather
Stations



Temperature
& Humidity



Weather
Alert Radio



Kitchen
Thermometers
& Timers



Clocks

It's more than accurate, it's **ACU RITE®**.

AcuRite offers an extensive assortment of precision instruments,
designed to provide you with information you can depend on to
Plan your day with confidence™.

www.AcuRite.com

©Chaney Instrument Co. All rights reserved. AcuRite is a registered trademark of the Chaney Instrument Co., Lake Geneva, WI 53147. All other trademarks and copyrights are the property of their respective owners. AcuRite uses patented technology. Visit www.AcuRite.com/patents for details.