

Carabiner Flashlight

model 08551W, 08552W, 08553W

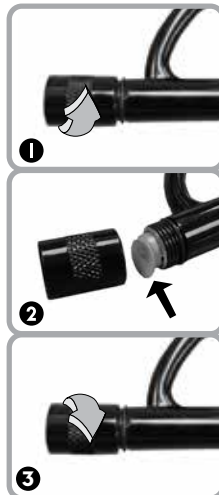
Congratulations on your new AcuRite product. To ensure the best possible product performance, please read this manual in its entirety and retain it for future reference.



Getting Started

Please note that the carabiner flashlight ships with a plastic safety insert located in the battery compartment. This safety insert helps conserve energy while the product is being stored, packaged and shipped. Simply remove the small plastic insert so that the carabiner flashlight will be able to function properly.

1. Twist the cap of the flashlight assembly counter clockwise.
2. Remove the small plastic disc that covers the battery sleeve.
3. Replace the cap by twisting clockwise, making sure not to over-tighten.



Instructions for Use

NOTE: Carabiner Flashlight is not intended for load-bearing activities and should not be used for climbing.

1. To power on the flashlight, twist the cap clockwise until the light illuminates.
2. To power off the flashlight, twist the cap counter clockwise until the light shuts off.



PLEASE DISPOSE OF OLD OR DEFECTIVE BATTERIES IN AN ENVIRONMENTALLY SAFE WAY AND IN ACCORDANCE WITH YOUR LOCAL LAWS AND REGULATIONS.

BATTERY SAFETY: Follow the polarity (+/-) diagram in the battery compartment. Promptly remove dead batteries from the device. Dispose of used batteries properly. Only batteries of the same or equivalent type as recommended are to be used. DO NOT incinerate used batteries. DO NOT dispose of batteries in fire, as batteries may explode or leak. DO NOT mix old and new batteries or types of batteries (alkaline/standard). DO NOT use rechargeable batteries. DO NOT recharge non-rechargeable batteries. DO NOT short-circuit the supply terminals. Battery contains mercury. Do not put in trash. Recycle or manage as hazardous waste.



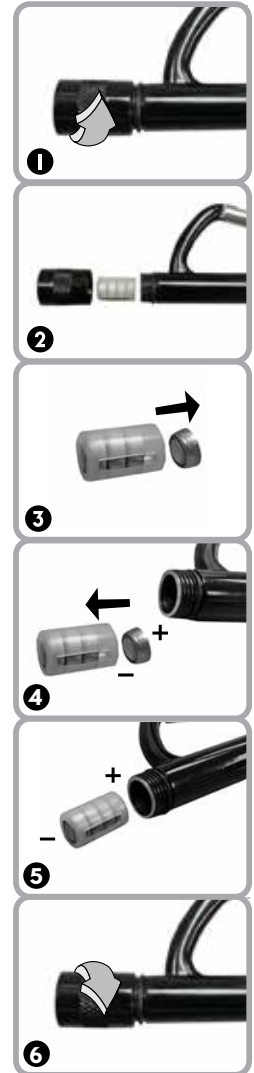
WARNING: THIS PRODUCT CONTAINS A BUTTON-CELL BATTERY. IF SWALLOWED, IT COULD CAUSE SEVERE INJURY OR DEATH IN JUST 2 HOURS. SEEK MEDICAL ATTENTION IMMEDIATELY IF INGESTED.



SAVE THIS MANUAL FOR FUTURE REFERENCE.

Replace the Battery

1. Open the flashlight by twisting the cap counter clockwise.
2. Remove the plastic sleeve containing (4) "LR 41" button cell batteries.
3. Remove the batteries from the plastic sleeve, making sure to note the orientation of the batteries before removing them from the sleeve.
4. Place (4) new batteries into the plastic sleeve, making sure that each new battery is facing "-" side up.
5. Replace the plastic sleeve with the new batteries into the flashlight, with the "+" side facing down and the "-" terminal facing up.
6. Replace the cap by twisting it clockwise, making sure not to overtighten.



Safety Information

This Carabiner Flashlight is not designed for load-bearing activities and should not be used for climbing.

Specifications

POWER	4 x "LR 41" (included)
--------------	------------------------

Questions? Contact Customer Support at (877) 221-1252 or visit www.AcuRite.com.